

ÖZKARTALLAR CAMPAK JOINT VENTURE

**Solid Waste
Management Plan for
Sikandar Block (UC-
109)**

2015

By:

*M Ali Saleem
Deputy Manager Operations*

5TH FLOOR, SHAHEEN COMPLEX, EGERTON ROAD, LAHORE

Contents

1. Facts.....	2
2. Operational Arrangements / Resources Deployed	2
2.1 1 st Shift Arrangement – 6 AM to 2 PM.....	2
2.2 2 nd Shift Arrangement - 2 PM to 10 PM	3
2.3 3rd Shift Arrangement – 10 PM to 6 AM	3
3 Introduction.....	4
4 Solid Waste Generation	4
5 Solid Waste Management Practices	4
6 Street Sweeping and Waste Collection by Sanitary Workers	5
6.1 Team Division	5
7 Human Resource	5
8 Solid Waste Storage	7
8.1 Waste Storage Facility.....	7
8.2 Points of Containers.....	8
9 Solid Waste Collection & Transportation.....	9
9.1 Route for Compactor	9
9.2 Staff Deployment for Compactor Vehicle	10
10 Door To Door Waste Collection	11
10.1 System for D-T-D Waste Collection	11
11 Major Roads.....	13
12 C & D Points.....	13
13 Open Plots.....	14

Özkartallar Campak Joint Venture

1. Facts

SR.N	Description	
1	Phase	C
2	UC	109 –Sikandar Block
3	Deputy Manager Operations	M. Ali Saleem
4	Zonal Officer LWMC	Javaid Gondal
5	Population	67875
6	UC Area	2352922 m ² (middle income)
7	Waste Generation (estimated)	44.12 kg/person/day

2. Operational Arrangements / Resources Deployed

2.1 1st Shift Arrangement – 6 AM to 2 PM

Manual Sweeping		
Sanitary Supervisors	4	
Sanitary Workers	45	
Wheelie Bins	4	
Hand Carts	9	
Special Gang		
Sanitary Workers	33	
Sanitary Supervisor	1	
Note: Special Gang solely on Deputy Manager disposal to attend important complaints and to work for absent workers beats of the day		
Containers Collection		
Containers Placed	70	
Containers Points	30	
Compactors	C-1024	1 trip, approx. 10 tons
	C-1097	1 trip, approx. 10 tons
Drivers	2	
Helpers	4	
D-T-D Collection		
Mini Dumpers – Suzuki Pickup	1	MD-45
Driver	1	
Helper	1	
Note: Compactor also collecting waste if waste bags found on road or in front of home or shop		

Özkartallar Campak Joint Venture

2.2 2nd Shift Arrangement - 2 PM to 10 PM

Manual Sweeping - Special Gang		
Shift In-charge	1	
Sanitary Workers	4	
Note: for taking care of whole UC-109, attending major roads, markets, 1139 complaints and to coordinate compactors and ensure containers collection.		
Containers Collection		
Compactors	1	C-1091, 1 trip (approx. 8 to 10 tons)
Note: attending UC 109		

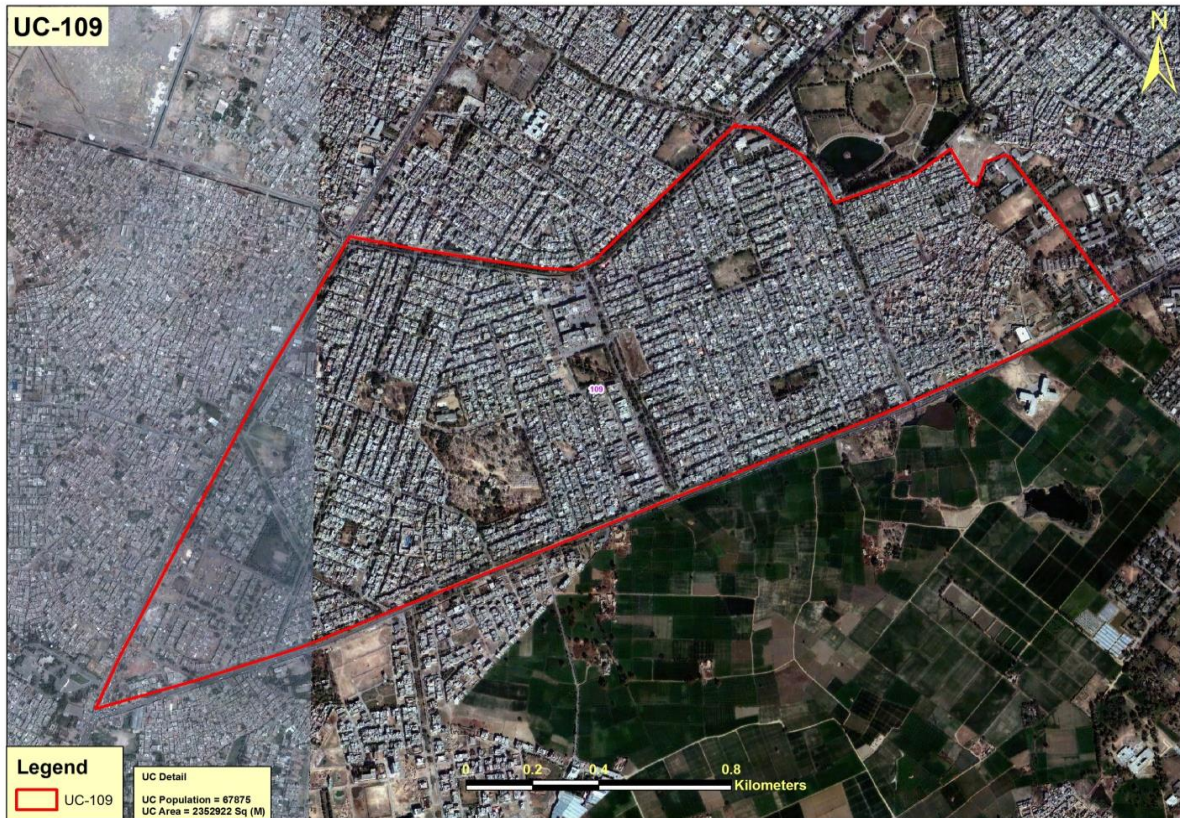
2.3 3rd Shift Arrangement – 10 PM to 6 AM

Containers Collection		
Compactors	1	C-1019, 1 trip (approx. 8 to 10 tons)
Driver	1	
Helper	2	
Note: Attending all UC's of Zone-20		

3 Introduction

Union Council – 109 (Sikandar Block) is located in Samanabad Town. Total area of the UC is 2352922 m² with population of 67875¹. This area is predominantly middle income area with planned settlement.

Figure 1: Map of UC 109



4 Solid Waste Generation

Estimated solid waste generation is 44.12 tons per day @ waste generation rate of 0.65 kg/person/day.

5 Solid Waste Management Practices

This area is under control of M/s. OZPak J.V for solid waste management. Existing arrangements for SWM based upon actual operations are as follows:

¹ Punjab Development Statistics – 2011, Bureau of Statistics, Govt. of the Punjab

6 Street Sweeping and Waste Collection by Sanitary Workers

6.1 Team Division

Teams are divided according to equivalent sweeping length of the area which is as follows:

Teams/Block	Street Length (m)	Length per Worker (m)
1	15500	1550
2	8300	1383
3	14300	1588
4	7300	1460
5	12400	1771
6	13100	1637
Total	74646	Avg. (1565)

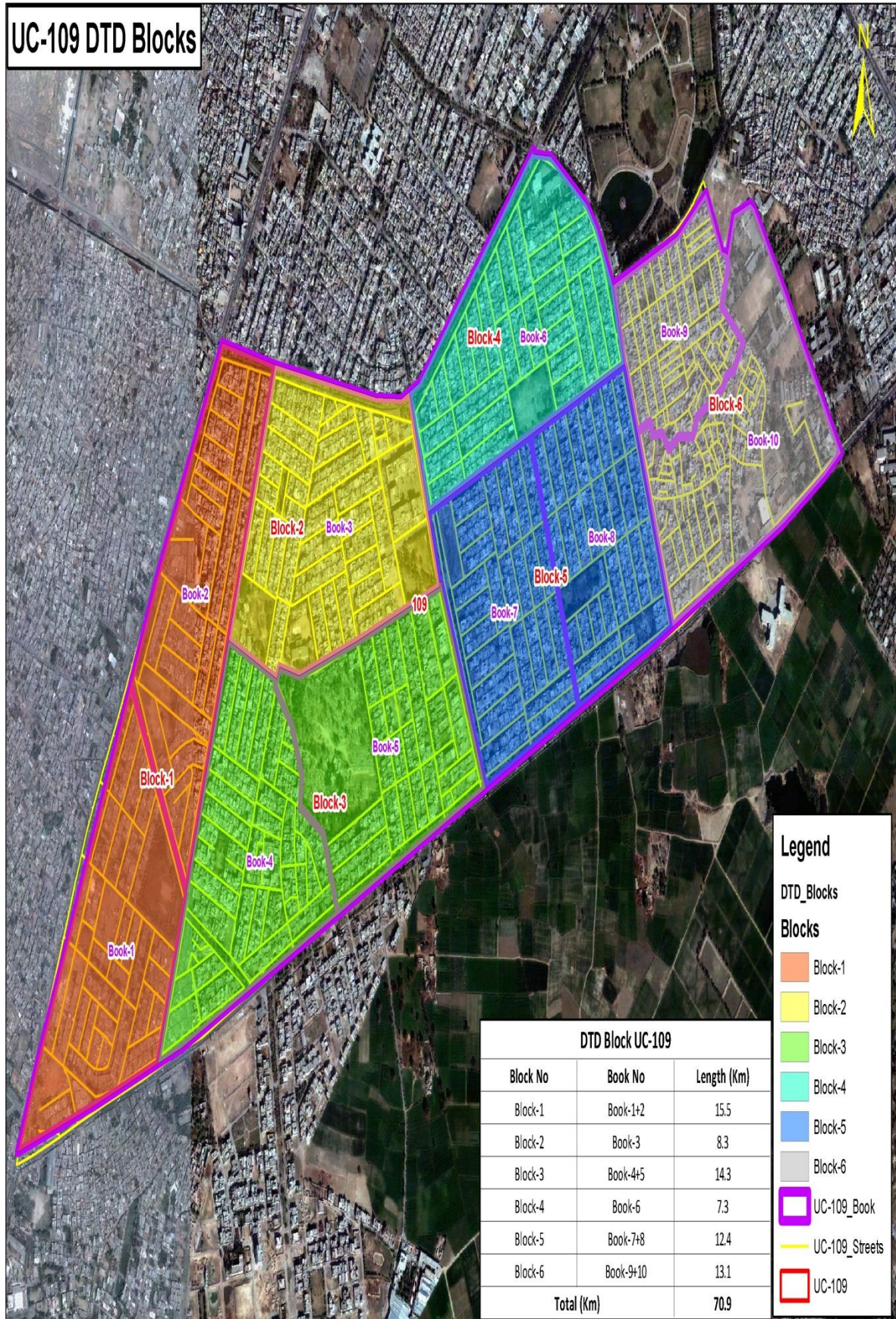
- Approximately 11 sanitary workers deployed in Team and each sanitary worker has his own defined beat. .
- Solid waste is collected by sanitary workers from streets & households and hauled to container by wheelie bins / hand carts.
- Waste bags also used for roads sweeping

7 Human Resource

Teams	Supervisor/Sargent	Sanitary workers
1	Sargent 1	15
2	Sargent 2	10
3	Sargent 3	10
4	Sargent 4	10
Total	4	45

Overall In-Charge Manual Sweeping	MAZHAR HUSSAIN (0321-4022380)
--	----------------------------------

Figure 2: Map of System Blocks/Teams

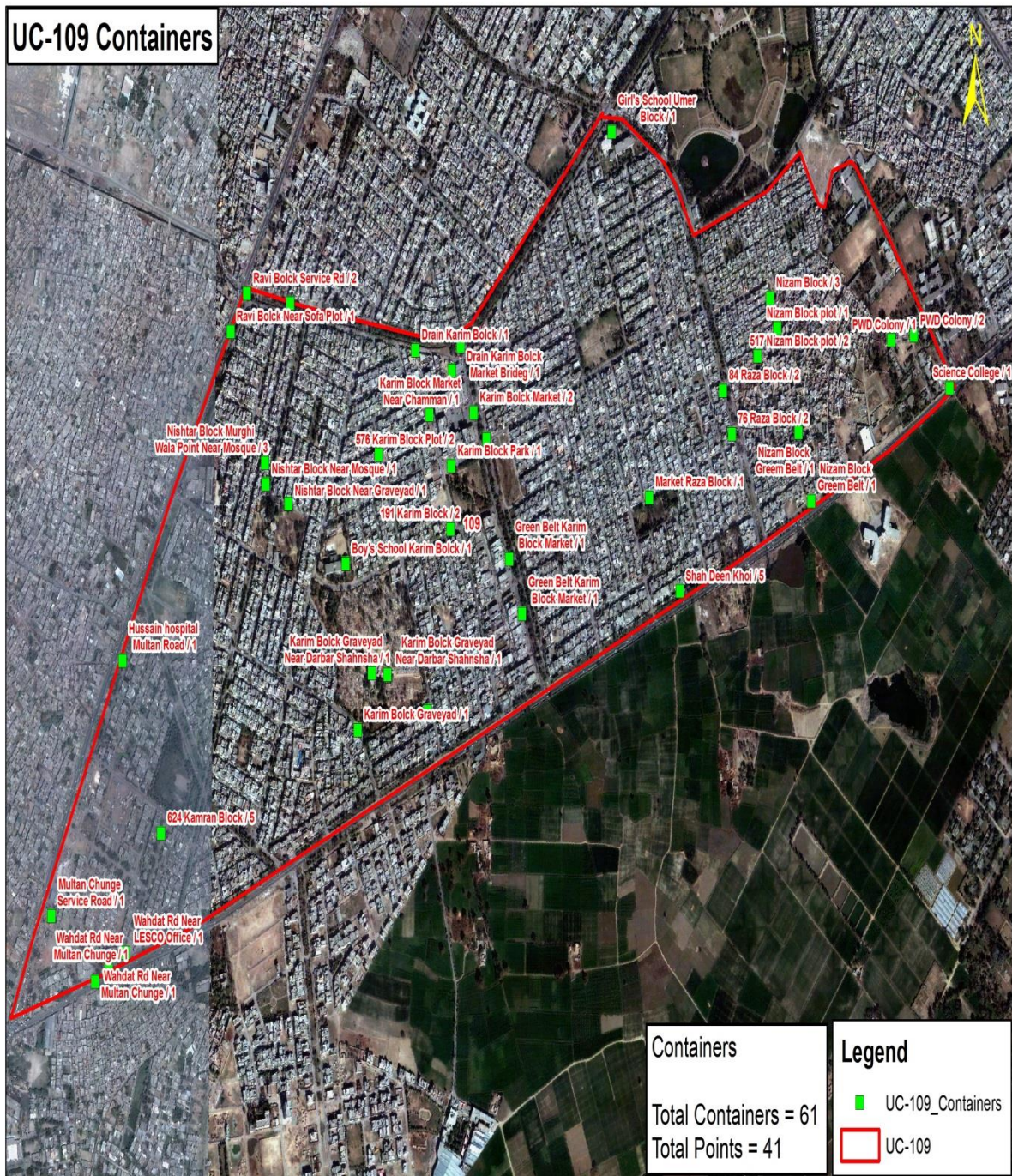


8 Solid Waste Storage

8.1 Waste Storage Facility

- Currently 70 waste storage containers are placed at 30 different points.
- Storage capacity is 17.5 tons in one time lifting
- Lifting is operational in 3 times

Figure 3: Location of Containers



Özkartallar Campak Joint Venture

8.2 Points of Containers

Sr. No.	Location of Containers	No. of Containers
C13-1024		
1	Nizam Block Green Belt	1
2	515 Nizam Block	3
3	Nizam Block Open Plots	8
4	12 Nizam Block Wahdat Road Service Lane	1
5	150 Nizam Block	2
6	PWD Colony	3
7	Shah Di Khoi	8
8	Raza Block Market	1
9	Umar Block Government Girls High School	1
	Sub Total	28
C13-1097		
10	Ravi Block Main Multan Road Service Lane	1
11	Hussain Hospital near 232 Kamran Block	1
12	Multan Road Service Lane Fruit Mandi	1
13	Main Wahdat Road Multan Chungi	1
14	Near Hawkers Main Wahdat Road Multan Chungi	1
15	712 Kamran Block Dar-e-Arqam School	2
16	785 Kamran Block	2
17	161 Karim Block near Caltex Pump	1
18	Karim Market near Dubai Plaza	1
19	191 Karim Block	3
20	Karim Market Parking Side	3
21	Karim Market near Chaman Restaurent	2
22	Karim Market opposite PSO Pump	1
23	576 Karim Block Open Plot	4
24	Karim Block Qabristan near WASA Tubewell	2
25	16-B Karim Block	1
26	Shehanshah Darbar	2
27	Karim Block Park near Tea Stall	2
28	Nishtar Block Murghi Wala Plot	9
29	Nishtar Block Qabristan	1
30	Government Boys School Karim Block	1
	Sub Total	42
	Grand Total	70

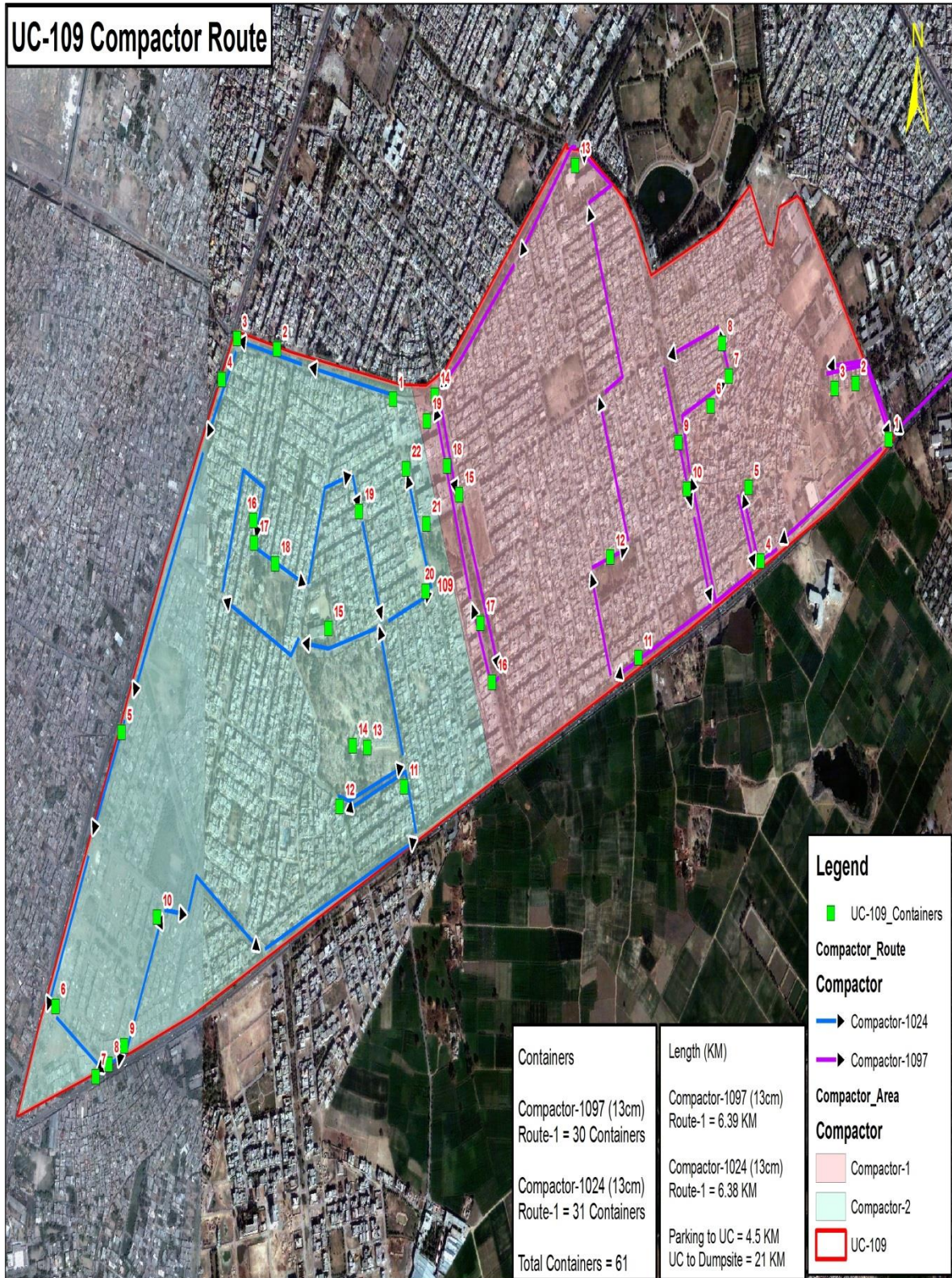
**Overall In-charge
Container Collection**

MAZHAR HUSSAIN
(0321-4022380)

9 Solid Waste Collection & Transportation

9.1 Route for Compactor

Figure 3: Existing Route for Compactor Vehicle (little variation possible)



Özcartallar Campak Joint Venture

9.2 Staff Deployment for Compactor Vehicle

Conservancy Staff Zone-20						
Overall In-charge =M Ali (0333-8309550)						
Supervisor = Liaqat Suroya (0323-4690682)				Supervisor = Zafar Iqbal (0321-4835525)		
1st shift				2nd shift		
UC	Vehicle No.	Driver Name & Mobile No.	Helpers	Vehicle No.	Driver Name & Mobile No.	Helpers
103	1089	Ashfaq Hamid (0322-8439732)	Nazar Laal Nadeem Younas	1098	Nasir Munir (0311-4414151)	Waqas
	1012	Farooq Hussain (0322-4221120)	Aslam Bashir khuram Georange			Mushtaq
104	1075	Shahid Mehmood (0341-4000142)	Adnan Riaz Liaqat Shir	1089	Nadeem Butt (0322-8065612)	Pervaiz
	1098	Nadeem Rashid (0315-6939439)	Amin Sama Riaz			Ashraf
107	1034	Asrar Ghulam (0300-4612488)	Javaid Daniyal Azeem Boota	1075	Sarwer (0323- 864085)	Baber
	1055	Muzamal Peer (0344-4065213)	Son Natha Javaid Laba			Fiaz
108	1043	Asif Siddique (0300-8810736)	Salim Sadiq safdar dogar	1098	Nasir Munir (0311-4414151)	Waqas
	1036	Qaiser Masih (0304-4651052)	Rafique Hadyat Qaiser josaph			Mushtaq
109	1097	Akmal Akbar (0344-7841179)	Baga Karamat Ali Riaz	1091	Muhammad Tariq (0300- 4820350)	Sunny
	1024	Adnan George (0315-4688438)	Sadiq Saraj & Azmat			Shahbaz
115	1040	Illyas Hamid (0311-4944290)	Daniyal sabar Kramat Manha	1066	Heera (0314- 4976088)	Sohail
	1091	Bola Mangta (0331-4718543)	Naeem Salim Ishaq			Nadeem
All UC's Main Roads	1064	M. Maalik (0306-4010063)	Karamat Kala Inayat			
Multan Road	1066	Amanat Laba (0302-4832052)	Imran Fiaz			

10 Door To Door Waste Collection

10.1 System for D-T-D Waste Collection

- 1 Mini-Dumper for door to door waste collection
- Waste collected by pickup will be unloaded into nearby Compactor or transfer station.
- Compactors are also collecting waste if found in waste bags on road or in front of home or shop

Mini Dumper / Suzuki Pickup			
Block 1	6:30 AM to 8:00 AM	Block 2	8:00 AM to 11:00 AM
Block 3	11:00 AM to 12:00 PM	Block 4	12:00 PM to 1:00 PM
Block 5	In 2nd Shift	Block 6	In 2nd Shift

Blocks	Major Areas/ Muhallas
Block 1	Nizam Block, PWD Colony, Shah Di Khoi
Block 2	Raza Block, Sikandar Block
Block 3	Ravi Block, Umar Block
Block 4	Karim Block, Sikandar Block
Block 5	Mehran Block, Nishtar Block
Block 6	Kamran Block

Özkartallar Campak Joint Venture

Figure: 5 Door-to-Door Maps

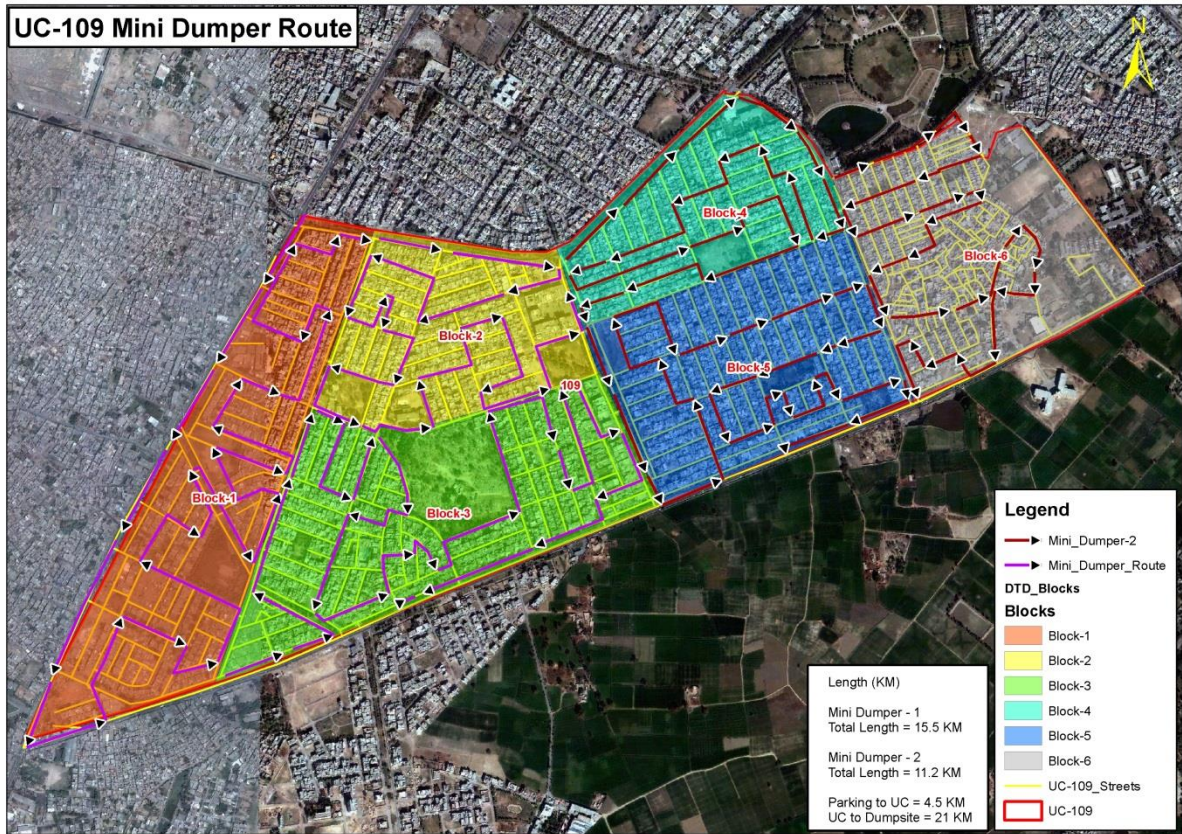
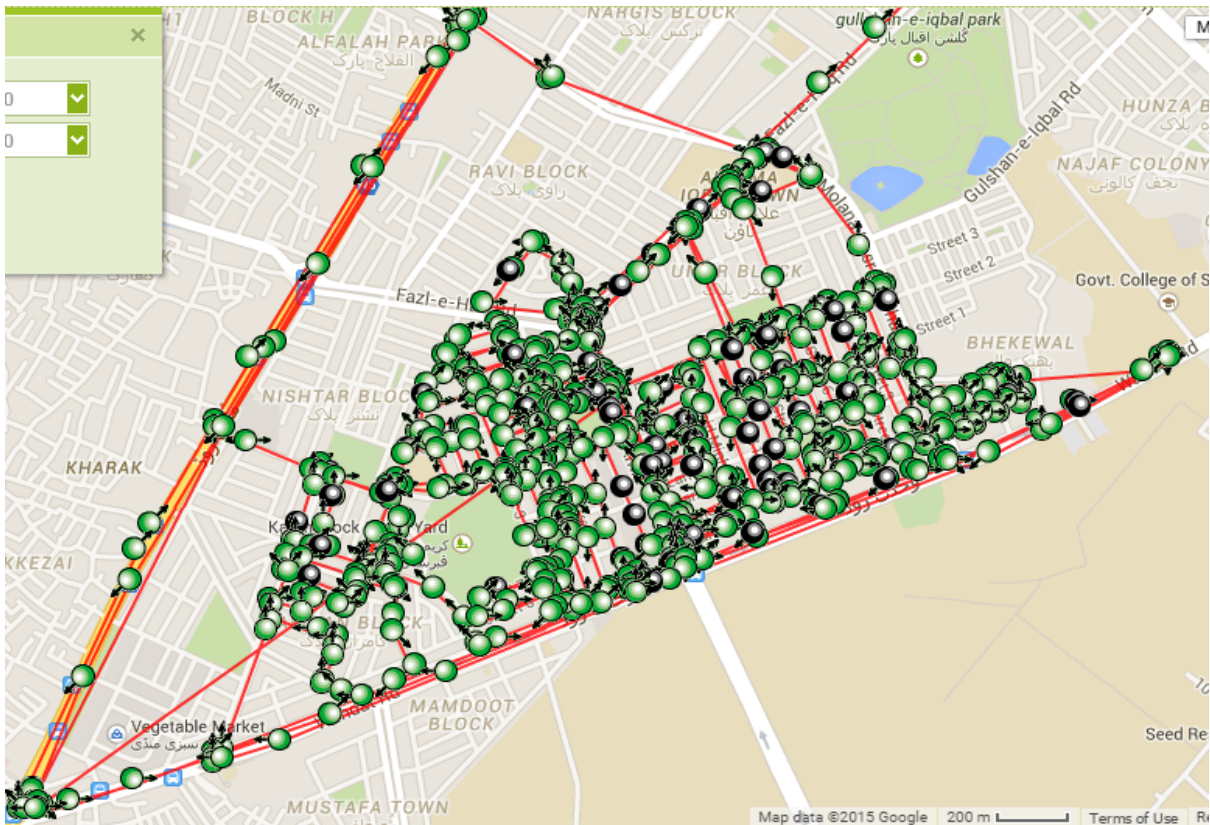


Figure: 6 Mini-Dumper Screen Shot



11 Major Roads

- Wahdat Road
- Multan Road
- Karim Market Road

12 C & D Points

- Nishtar Block
- Mehran Block
- Kamran Block
- Sikandar Block
- Umar Block
- Raza Block
- Karim Block
- Ganda Naala
- Murghi Wala Plot

Figure 7: C & D Points



13 Open Plots

- 150 Sikandar Block
- 269 Kamran Block
- 373 Nishtar Block
- 395 Mehran Block
- 435 Umar Block
- 576 Karim Block
- 819 Raza Block
- Murghi Wala Plot
- Nizam Block

